

FRONTAGE™

The ANTI-UV EXTERIOR PANEL

High Pressure Exterior Laminates



FRONTAGE

Exterior Compact Laminate

About **FRONTAGE**:

- Incorporated in the year 2008, at New Delhi
- We undertake various projects base
- Immense domain expertise
- State-of-the-art-infrastructure
- Robust infrastructure facility

Why **FRONTAGE** ?

- Innovative and creative designs
- High level of customer satisfaction
- Market leading prices
- On time delivery
- International quality standards
- Provide customized solutions
- Total Customer satisfactions
- Offer logistic support

Factory Detail

- **HPL(XCL) Manufacturing factory in Ahmedabad**
- An integrated manufacturing unit from resin preparation to finish product. Producing more than **1.2 million square meters every month.**

Factory visit





Work destination Pan India

Properties

- **Exterior Compact Laminates** as the name suggests is the ideal product for exterior applications made from Kraft and decorative paper. High UV resistance which makes it ideal for exterior and cladding facades.
- **HPL panels** available in size length 8 feet and width 4 feet & the thickness 6mm with different shades.

Durability:

- Compared to other decorative materials like paints, ACP Sheets, Tiles etc. HPL offer a significantly longer life time.
- HPL are difficult to ignite and have properties that retard spread of flame. In a fire situation they do not soften or release burning droplets.
- Resistance to staining.
- Resistance to chemical attack.
- Resistance to UV light.
- Resistance to artificial weathering.
- Resistance to scratching.
- Resistance to abrasion.

Applications of **FRONTAGE**

- -Exterior Wall Cladding
- - Airports
- - Fences Rails and Screens
- - Louvers Signage
- - Roof Cladding
- - Window Panels
- - Pedestrian Shelters
- - Garage
- - Kiosk
- - Roof Cladding

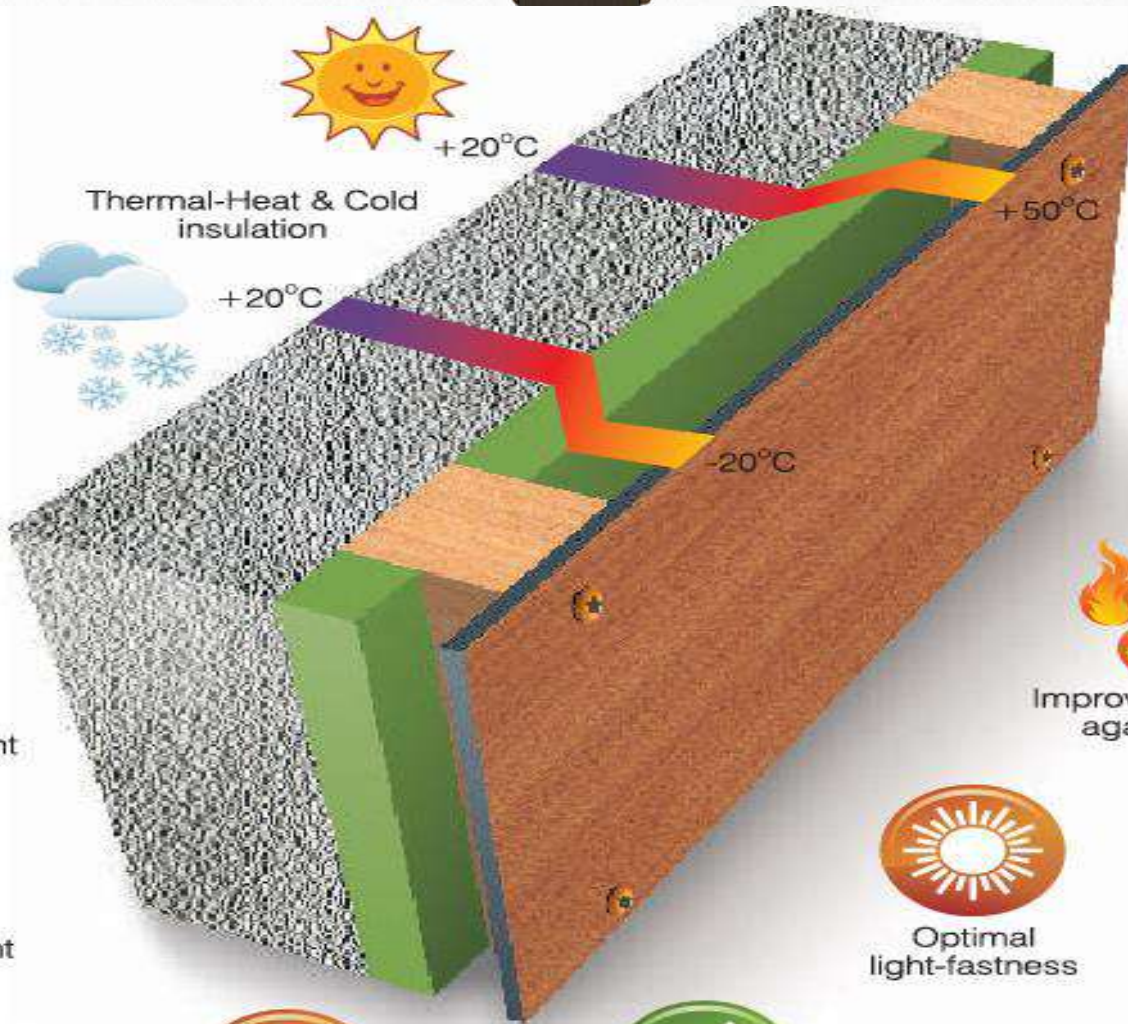
Facade



Gates



Balcony



Waterproof against Rain



Improves sound insulation



Improves reaction against Fire



Optimal light-fastness



$+20^{\circ}\text{C}$

Thermal-Heat & Cold insulation



$+20^{\circ}\text{C}$

-20°C

$+50^{\circ}\text{C}$



Easy to clean



Solvent resistant



Impact resistant



Double hardened



Scratch resistant



Easy to install

Sl. No	PROPERTIES	TEST METHOD	ATTRIBUTES OF PERFORMANCE	UNIT OF MEASUREMENT	RESULTS (AS PER EN438-6)
1 SURFACE QUALITY					
1.1	Surface quality	EN 438-2.4	Spots, dirt and similar surface	mm ² /m ²	≤ 2
			Fibres, hairs and scratches	mm ² /m ²	≤ 20
2 DIMENSIONAL PROPERTIES					
2.1	Thickness	EN 438-2.5	Thickness tolerance	mm	5≤T<8:± 0,4
2.2	Size	EN 438-2.6	Length and Width	mm	+10/-0
2.3	Straightness of edge	EN 438-2.7	Straightness of edges	mm/m	≤1,5
2.4	Squareness	EN 438-2.8	Squareness	mm/m	≤1,5
2.5	Flatness	EN 438-2.9	Flatness (measured on full-size sheet)	mm/m	6.0≤T<10,0:5
3 PHYSICAL PROPERTIES					
3.1	Flexual Modulus	EN ISO 1 78	Stress	Mpa	≥9000
3.2	Flexual Strength	EN ISO 1 78	Stress	Mpa	≥80
3.3	Tensile Strength	EN ISO 527-2	Stress	Mpa	≥ 60
3.4	Density	EN ISO 1183	Density	gm/cm ³	≥ 1,35
3.5	Resistance to impact with large diameter bill	EN 438-2.21	Indent dia.10mm 2≤T< 6mm Drop Height	min.	≥1400
			Indent dia.10mm T≥6mm - Drop Height	min.	≥1800
3.6	Resistance to Wet Conditions	EN 438-2.15	Mass increase - 2 ≤ T <5mm	max.%	EGS- ≤7, EGF-≤ 10
			Mass increase - T ≥ 5mm	max.%	EGS- ≤5, EGF-≤ 8
			Appearance	Rating	≥ 4
3.7	Dimensional stability at elevated temperatures	EN 438-2.17	Cumulative dimensional change -2≤T<5mm	Longitudinal %	≤ 0.40
				Transversal %	≤ 0.80
			Cumulative dimensional change -T≥5mm	Longitudinal %	≤0.30
				Transversal %	≤ 0.60
4 WEATHER RESISTANCE REQUIREMENTS					
4.1	Resistance to Climatic Shock	EN 438-2.19	Thermal Shock Resistance- Appearance	Rating	≥ 4
4.2	Resistance to Artificial Weathring	EN 438-2.29	Contrast	Grey scale rating	≥ 3
			Appearance	Rating	≥ 4
5 FIRE PERFORMANCES					
5.1	Fire Reaction Classification	EN 135 01	Test as per EN 13823 (SBI test) and EN ISO 11925 -2 (Small-burner test)		
			Classification - 3 ≤ T < 6mm	Classification	B-s2, d0
			Classification - 6 ≤ T < 13mm	Classification	B-s1, d0

Benefits of **FRONTAGE**

- **Decorative –**
- **High Weather resistance –**
- **Optimal light fastness –**
- **Scratch & Solvent resistance –**
- **Easy to maintain –**
- **Heat & Fire resistance –**
- **Free from heavy metals –**
- **Sustainability –**
- **Low cost maintenance –**
- **Decreases air conditioning costs –**
- **Self supporting & Impact resistance –**
- **Easy rapid installation & repair procedure –**
- **Increased sound proofing function (upto 15Db) –**
- **Provides wall protection and heat insulation against atmospheric precipitation**

FRONTAGE HPL Vs. ACP Vs. Tiles Vs. Stone

- **FRONTAGE** HPL outperforms all these other products with its beautiful natural & wooden looks.
- **FRONTAGE** HPL is more durable in exterior & interior application in comparison with other three.
- **FRONTAGE** HPL has vast variety of natural wooden shades, solid color, abstracts & stone design in many textures and non textures (matt) finishes.

	FRONTAGE HPL	ACP	TILES	STONE
PERFORMANCE	4/5	3/5	2/5	3/5
COST EFFECTIVENES S	3/5	3/5	4/5	1/5
LOOKS	5/5	2/5	1/5	3.5/5
DURABILITY	5/5	2/5	3/5	4/5
DÉCOR STRENGTH	5/5	3/5	3/5	2/5
WEATHER RESISTANCE	4/5	4/5	3/5	4/5

So, with these stats in hand
choose the best one.

	MARKS	RANK
FRONTAGE HPL	26	1st
ACP	17	3rd
TILES	16	4th
STONE	17.5	2nd

Our complete Residential sites



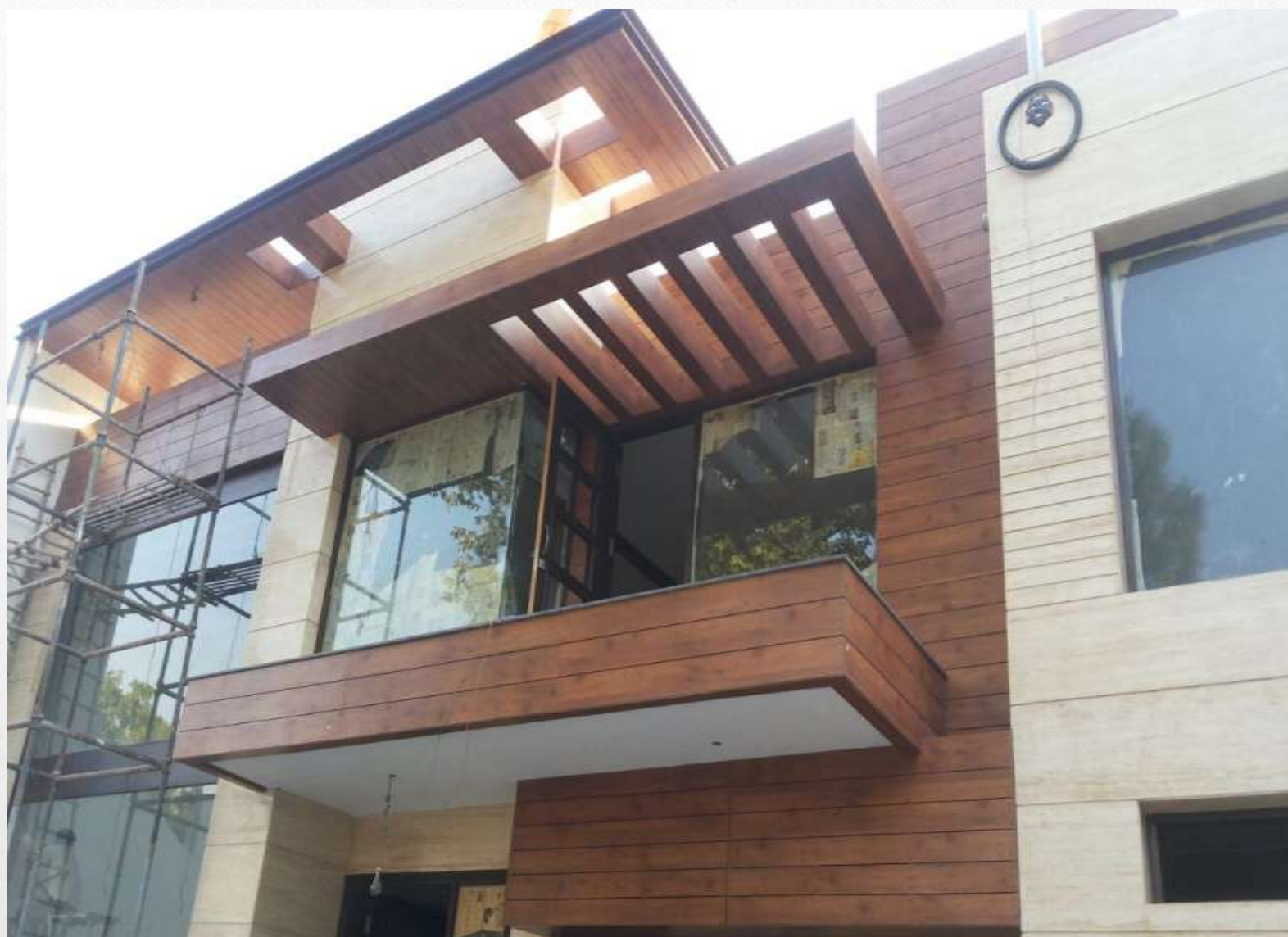


Our Project Sites









“We, at **FRONTAGE** HPL pledges to make planet more Beautiful, Elegant and Stylish place to live in”.

- Team **FRONTAGE**

Contact Us:

FRONTAGE

Email: exteriorhpl@gmail.com

Website: www.frontagepanels.in

Thank you

